

Light-Powered Reactivation of Flagella and Contraction of Microtubule Networks: Toward Building an Artificial Cell

Raheel Ahmad,[#] Christin Kleineberg,[#] Vahid Nasirimarekani, Yu-Jung Su, Samira Goli Pozveh, Albert Bae, Kai Sundmacher, Eberhard Bodenschatz, Isabella Guido, Tanja Vidaković-koch,^{*} and Azam Gholami^{*}



Cite This: *ACS Synth. Biol.* 2021, 10, 1490–1504



Read Online

ACCESS |



Metrics & More

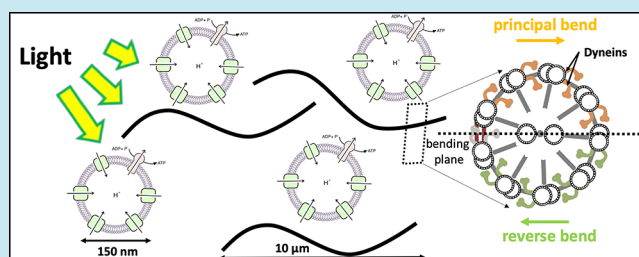


Article Recommendations



Supporting Information

ABSTRACT: Artificial systems capable of self-sustained movement with self-sufficient energy are of high interest with respect to the development of many challenging applications, including medical treatments, but also technical applications. The bottom-up assembly of such systems in the context of synthetic biology is still a challenging task. In this work, we demonstrate the biocompatibility and efficiency of an artificial light-driven energy module and a motility functional unit by integrating light-switchable photosynthetic vesicles with demembrated flagella. The flagellar propulsion is coupled to the beating frequency, and dynamic ATP synthesis in response to illumination allows us to control beating frequency of flagella in a light-dependent manner. In addition, we verified the functionality of light-powered synthetic vesicles in *in vitro* motility assays by encapsulating microtubules assembled with force-generating kinesin-1 motors and the energy module to investigate the dynamics of a contractile filamentous network in cell-like compartments by optical stimulation. Integration of this photosynthetic system with various biological building blocks such as cytoskeletal filaments and molecular motors may contribute to the bottom-up synthesis of artificial cells that are able to undergo motor-driven morphological deformations and exhibit directional motion in a light-controllable fashion.



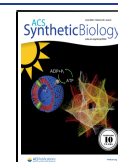
Bottom-up synthetic biology is an emerging field of science that focuses on the engineering of life-like structures. These artificial constructs mimic some of the essential life processes such as reproduction, growth, motility, *etc.* The reconstitution of each of these processes is quite complex, so the bottom-up synthetic biology initially focuses on subsystems (functional modules), which are hand-tailored to partially or entirely mimic some of the essential life processes.^{1–4} Later on, these functional modules can be combined to build higher hierarchical structures. Artificial systems capable of moving forward are highly attractive for different applications. Examples are smart drug delivery vehicles or so-called designer immune cells, which would be capable of detecting and moving toward a chemical signal or tumor.⁵ In these applications motility is only one of the functionalities, but even its reconstitution is quite challenging since it embraces not only the assembly of molecular motors (a motility functional module) which enable movement, but also the energy supply (energy functional module).

In nature, different motility mechanisms have evolved, including polarized assembly and disassembly of biopolymers for directional motion of amoeboid cells,^{6,7} or propulsion powered by tiny hair-like organelles, cilia and flagella, which perform whip-like motion to provide motility.⁸ Arrays of ciliated cells work together to generate directed fluid transport.

This includes removal of pollutants in the trachea⁹ or the shuttling and delivery of messenger-containing cerebral spinal fluid (CSF) in our brains.¹⁰ Besides the fluid transport, the regular beating pattern of cilia and flagella propels microorganisms such as spermatozoa, or unicellular organisms such as *Paramecium* and green algae *Chlamydomonas reinhardtii*.^{11–14} Cilia and flagella are highly conserved organelles composed of a microtubule-based structure called axoneme, which is covered by a plasma membrane.^{19,20} Nine microtubule doublets, each formed of a complete A-microtubule and an incomplete B-microtubule, are cylindrically arranged around a central pair of singlet microtubules (Figure 1). The diameter of an axoneme is around 200 nm, and the adjacent microtubule doublets are spaced 30 nm away from each other.²¹ The functionality and structural properties of cilia and flagella are the same and can be classified as motile (9 + 2) and immotile sensory (9 + 0) cilia. To date, more than 250 constituent proteins have been found to contribute to the highly ordered

Received: February 24, 2021

Published: March 24, 2021



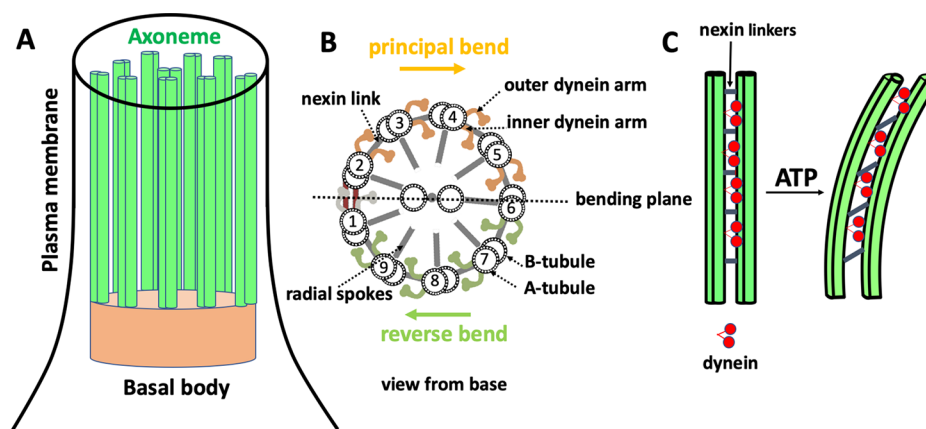


Figure 1. Structure of cilia/flagella. (A) Cilia/flagella have a cylindrical architecture composed of axoneme, plasma membrane, and basal body. (B) Axoneme has a microtubule-based structure formed of nine microtubule doublets at the periphery and two microtubule singlets at the center, which are associated with protein complexes such as radial spokes, inner dynein arm, outer dynein arm, and nexin linkers. There is a mechanical feedback from the bending on the regulation of dynein activity, which switches the activity of dyneins on the opposite side of the central pair microtubules.¹⁵ (C) In the presence of nexin proteins which cross-link the neighboring doublets, microtubules are not free to slide and active forces generated by dynein molecular motors bend the cilium/flagellum. Nexin linkers play an important role to convert the action of dynein motors in microtubule bending,^{16,17} and radial spokes ensure that dyneins work together in a highly coordinated manner to generate a regular wave pattern.¹⁸

and precisely assembled structure of axoneme.²² The microtubule doublets and the dynein molecular motors are the most important components of axonemes.^{23,24} Axonemal dyneins are highly specific for ATP as a substrate.^{25,26} In the presence of ATP, dynein molecular motors, which are statically bound to the A tubules of each doublet, anchor transiently to the B tubules of the neighboring doublet and generate internal stresses to displace adjacent microtubules relative to each other. However, since microtubule doublets are mechanically connected to the neighboring doublets and cannot slide freely,²⁷ this sliding force is converted into a bending motion (Figure 1C). The bottom-up reconstitution of flagella is of significant complexity, so we instead isolated this functional module from green alga *Chlamydomonas reinhardtii*.

Furthermore, microtubules (MTs) are one of the cytoskeletal filaments which, together with actin and intermediate filaments, provide shape and motility in eukaryotic cells and play a crucial role in formation of various cellular structures such as the dynamic asters found in mitotic and meiotic spindles.^{28–31} These spindles have a microtubule-based structure, which generates forces by polymerization-depolymerization or transduces forces generated by ATP-driven molecular motors. Encapsulation of cytoskeletal filaments and purified motors³² is a powerful tool to study the influence of geometrical confinement on self-organization of motor-driven filamentous network in cell-like compartments.³³ The ultimate challenging goal in the growing field of synthetic biology is to build an artificial cell with a self-sufficient energy conversion system to autonomously power the activity of molecular motors.

Both types of motility requires energy in form of ATP. ATP is also common chemical energy source for many different motility mechanisms found in nature.³⁴ Therefore, an ATP regeneration module is required for a self-sustained motility. With respect to this, we recently reviewed¹ different strategies for ATP regeneration in the context of bottom-up synthetic biology and we reported on different types of energy functional modules.^{35,36} They are utilizing either chemical³⁵ or light energy³⁶ to convert ADP to ATP. The latter system appears especially promising for coupling with such bottom-up

applications which rely only on ATP as an energy carrier and do not involve NADH (NAD(P)H) reductive power, like in the case of motility. The light energy driven ATP regeneration is not novel; for mimicking natural photophosphorylation, a series of artificial systems have been constructed to capture the energy of light and move protons across the membranes.³⁷ Simple prototypical systems, which combine light-driven proton pumps with the F_0F_1 -ATP synthase in liposomes have been demonstrated already in the early 70s, the motivation being to develop *in vitro* models for the mechanistic understanding of F_0F_1 -ATP synthase. By varying several different types of rhodopsins and F_0F_1 -ATP synthases as well as of the lipid composition, the productivity of these assemblies was improved as shown by us³⁶ and other authors.^{38–41} Recently, some examples showing coupling of the light-driven ATP regeneration module with energy intensive tasks like CO_2 fixation,⁴² actin contractions,⁴³ and protein synthesis⁴⁴ were demonstrated. However, there was no study demonstrating a self-sustained system showing directed movement driven by ATP.

Similar as in nature, where different types of motility have evolutionary emerged, artificial cells can also implement different motility mechanisms depending on their intended application. Therefore, we tested a possibility to integrate the energy module with two different motility modules. First, we integrated the light-switchable bottom-up assembled ATP regeneration module with a motility functional unit which was isolated from green alga *Chlamydomonas reinhardtii*. The combination of these two modules leads to an artificial system where energy of light is converted into mechanical work in a self-sustained manner. Next, we coencapsulated the light-to-ATP energy module with microtubules and kinesin-1 molecular motors to generate active stresses in confined cell-like compartments. We observed controlled motor-driven contraction of filamentous network upon light stimulation, indicating the efficiency of the artificial photosynthetic module in providing self-sufficient energy. This integrated system is potentially applicable in ATP-dependent motility assays, which aim to reconstitute motor-driven motion and force generation inside a synthetic cell, with the challenging goal of achieving a

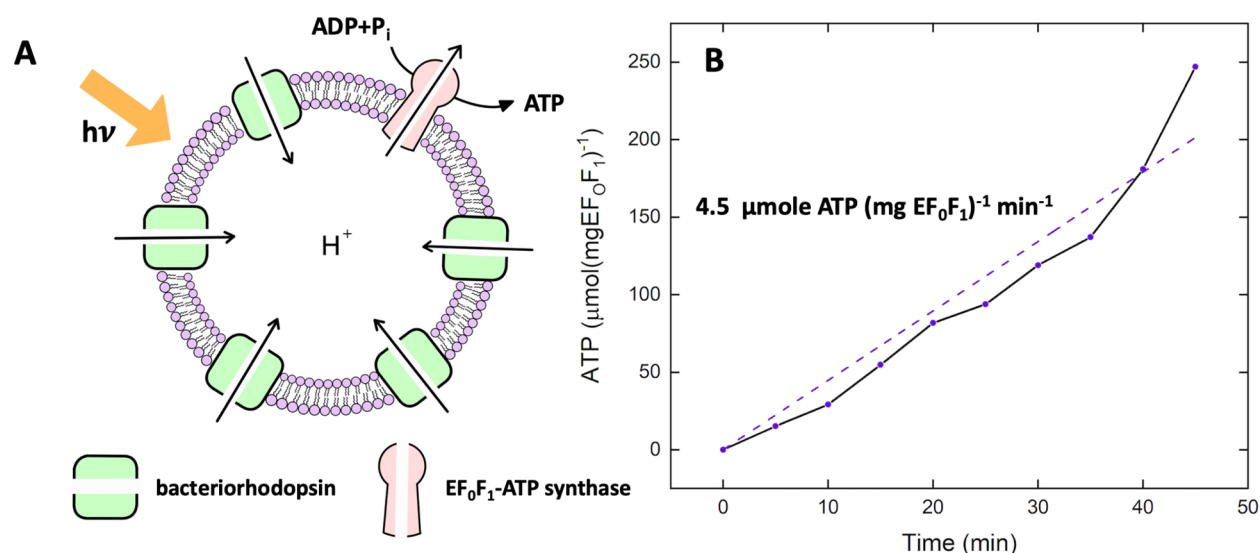


Figure 2. Light-driven ATP production. (A) Schematic representation of light-driven ATP synthesis in lipid vesicles. EF_0F_1 -ATP synthase uses the electrochemical proton gradient generated by bacteriorhodopsin to synthesize ATP from ADP and P_i . (B) Measurement of light-driven ATP production over time. The maximal rate of $4.5 \mu\text{mol ATP (mg EF}_0\text{F}_1)^{-1} \text{ min}^{-1}$ is determined by linear regression. Experiments are performed at room temperature with the HMDEKP buffer as the inner solution (30 mM HEPES-KOH, 5 mM MgSO_4 , 1 mM DTT, 1 mM EGTA, 50 mM potassium acetate, 1% (w/v) PEG, pH = 7.4). The same outer solution was adjusted with 5 mM NaH_2PO_4 , 2 mM MgCl_2 , 1 mM DTT and $810 \mu\text{M}$ ADP. $[\text{P}_i] = 5 \text{ mM}$, $[\text{lipid}] = 0.022 \text{ mg/mL}$, $[\text{EF}_0\text{F}_1] = 2.6 \text{ nM}$, $[\text{bR}] = 160 \text{ nM}$, and $\Delta\Psi = 143 \text{ mV}$ is the membrane potential (the outer potential minus the inner potential). Proteins were reconstituted with 0.8% Triton.

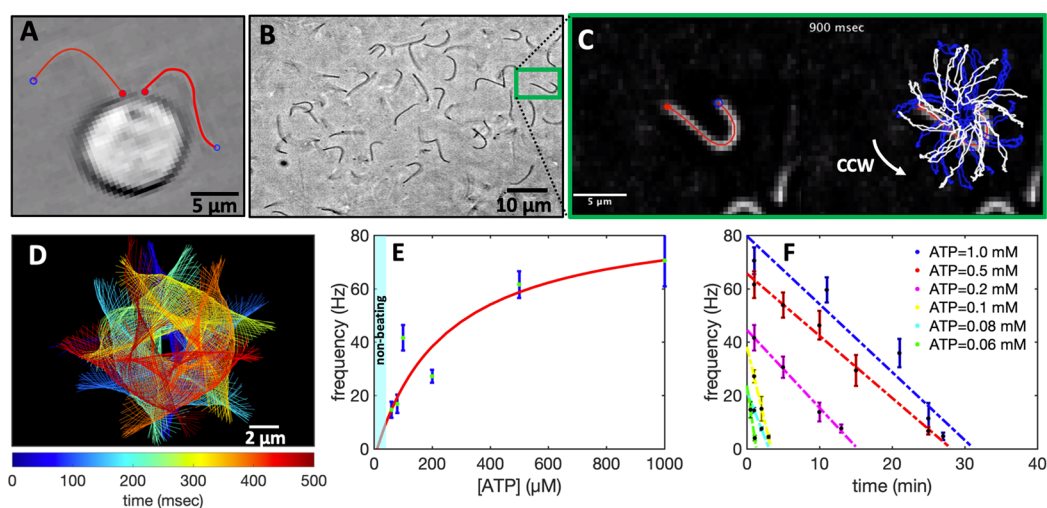


Figure 3. Experiments with pure commercial ATP. (A) Snapshot of a *C. reinhardtii* cell with its two flagella. (B) Isolated and demembrated flagella are reactivated with pure ATP. (C) Swimming trajectory of an exemplary axoneme beating at 18 Hz with $[\text{ATP}] = 80 \mu\text{M}$ (see Videos S1–S2). (D) Color-coded time projection of the axoneme in panel C shows the circular swimming path. (E) Mean beat frequency as a function of ATP concentration. Solid red line is a least-square fit to the modified Michaelis–Menten relation (see text). The critical minimum ATP concentration required to observe axonemal beating was $[\text{ATP}]_{\text{critical}} = 60 \mu\text{M}$. (F) Beat frequency decays over time at a rate that depends on ATP concentration. In the presence of 1 mM ATP (blue line) in a $10 \mu\text{L}$ channel, axonemes beat for 32 min at a decreasing beating frequency that allows us to estimate the averaged ATP consumption rate of 0.31 nmol/min. This rate depends on ATP concentration and decreases to 0.25 nmol/min for $[\text{ATP}] = 0.1 \text{ mM}$ (yellow line). Error bars are mean \pm standard deviation ($N = 7$).

light-controllable switch between the motile and immotile states of an artificial cell.

RESULTS

Light-Driven Energy Module. We engineered light-switchable photosynthetic liposomes ($\sim 150 \text{ nm}$ in diameter) as energy modules to generate ATP under illumination. To convert light into ATP, we coreconstituted two purified transmembrane proteins, namely, bacteriorhodopsin (bR) and EF_0F_1 -ATP synthase from *E. coli*. Upon illumination,

bacteriorhodopsin pumps proton into the vesicle's interior, establishing a proton motive force that drives ATP synthase to catalyze the conversion of ADP to ATP (Figure 2A). Both enzymes are isolated according to the procedures earlier described by Ishmukhametov *et al.*⁴⁵ and Oesterhelt.⁴⁶ Their purity is checked by SDS-PAGE analysis (SI, Figure S1). bR is reconstituted in the form of membrane patches to avoid material loss during solubilization. We recently showed that³⁶ the usage of monomeric, detergent-solubilized bR for reconstitution is also possible and will lead to a functional

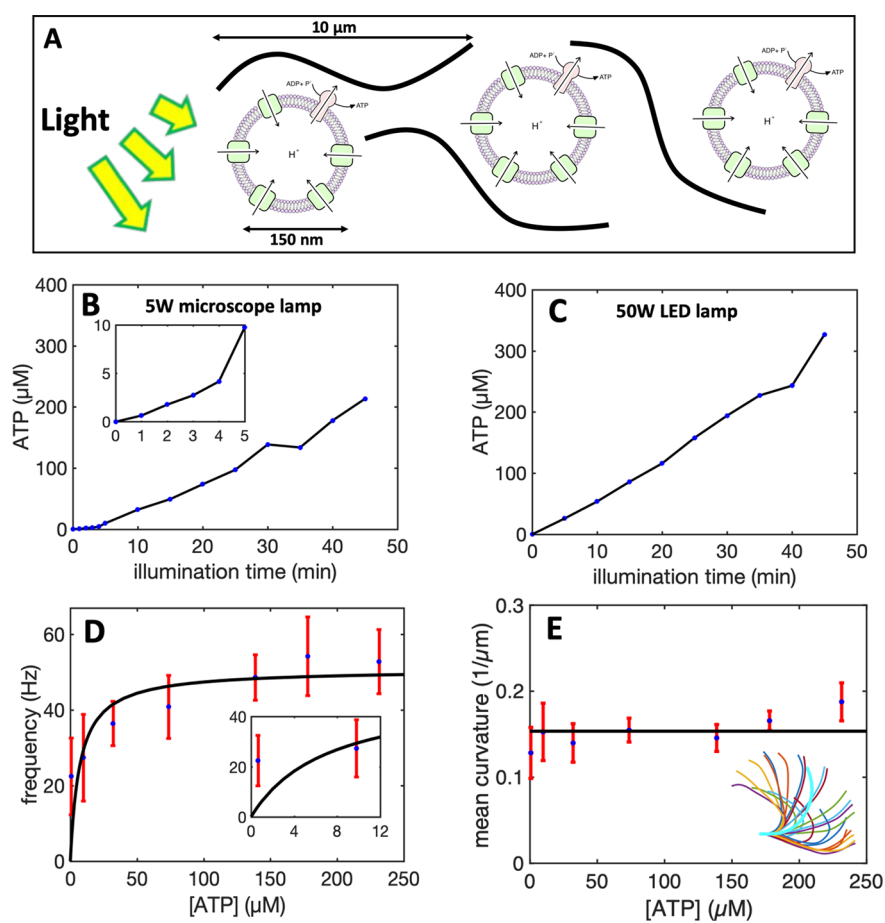


Figure 4. Integration of the motility module with the light-switchable energy module. (A) Schematic presentation of isolated flagella mixed with energy module. (B) Functionalized liposomes are illuminated for different times, generating ATP concentrations up to 213 μM under illumination with a 5 W microscope lamp. (C) Higher ATP concentrations up to 330 μM was produced under illumination with a 50W LED lamp. Both light sources are located 25 cm away from the sample. Inset shows ATP production in the time interval 0 to 5 min of illumination. (D) Axonemes beat faster at higher ATP concentrations produced by longer illumination of energy module under microscope light. Inset shows that axonemes beat even at small ATP concentrations below 10 μM . (E) Static curvature of the axonemes, defined as the curvature of the mean shape averaged over one beating cycle (arc-shaped filament with cyan color), does not significantly depend on ATP concentration. The black line shows a linear fit with the offset of $\sim 0.16 \mu\text{m}^{-1}$ and slope of zero. For each data point in panels D and E, frequencies of 10 axonemes are measured to calculate the mean and standard deviation.

ATP regeneration module. However, an almost uniform orientation of bR in phosphatidylcholine (PC) liposomes could only be achieved when using bR in the form of membrane patches (SI, Figure S2). Both enzymes are coreconstituted into preformed PC unilamellar vesicles using Triton X-100 as detergent, similar to the method described by Fischer and Gräber⁴⁷ for ATP synthase reconstitution. Liposomes are prepared using the extrusion method. The size of vesicles before and after reconstitution is checked using Dynamic Light Scattering (DLS). DLS data confirm an average vesicle diameter of $\sim 150 \text{ nm}$ (SI, Figure S3). Separate assays for each transmembrane protein further prove their functionality. bR proton pumping and intravesicular acidification is detected using pyranine as an internal probe (SI, Figure S4). The activity of ATP synthase is determined in an acid–base transition experiment (SI, Figure S5). ATP production in the coreconstituted module under illumination is measured using the luciferin/luciferase assay (Figure 2B).

The achieved maximal rate of $4.5 \mu\text{mol ATP (mgEF}_0\text{F}_1)^{-1} \text{ min}^{-1}$ is high compared to the literature work. An overview of different light-driven and chemically driven ATP regeneration modules and their ATP production rates can be found in our

recent article.¹ We mainly attribute this comparably high efficiency of ATP production to the increased amount of bR reconstituted in our system, aiming for a theoretical ratio of 1 ATP synthase and 96 bR molecules per liposome with an almost uniform direction. In most of the literature work^{1,37,39,41,48} significantly lower bR concentrations were used for coreconstitution. Only Racker and Stoerkenius⁴⁹ as well as Choi and Montemagno⁵⁰ applied bR concentrations of similar magnitude. Moreover, we found out that the vesicle preparation method has significant impact on the performance of the ATP module. Using dialysis liposomes instead of vesicles produced by extrusion, led to roughly a 50% decrease in activity. Furthermore, Dithiothreitol (DTT) has a positive effect on the ATP production rates. Only 43% of activity remained in the absence of DTT (SI, Figure S6). DTT is known to prevent oxidation and thus to preserve proteins in their functional form. In addition, DTT can contribute to changes in membrane potential, as shown in ref 51. Finally, all experiments have been done with ultra pure ADP ($>99.9\%$). Commonly offered ADP salt is highly contaminated with ATP ($>2\%$). Due to the high ADP concentration in the present measurements (1.6 mM), this would lead to a high ATP

concentration at the beginning of the experiments, which could compromise the activity of ATP energy module.

Integration of Energy Module with Motility Module.

Reactivation of Axonemes with Pure ATP. In this part, we aim to integrate the light-driven energy module with the motility module, namely, the flagella isolated from green algae *C. reinhardtii*⁵² (see Figure 3A,B and Materials and Methods). In the first step, we characterized the activity of the isolated flagella (~10 μm in length) using commercially available pure ATP.⁵³ Upon mixing ATP with demembrated flagella (axonemes), ATP powers dynein molecular motors that convert chemical energy into mechanical work by sliding adjacent microtubule doublets relative to each other (Figure 1C). However, due to mechanical constraints, MT doublets can not slide freely. Instead, sliding is converted into rhythmic bending deformations that propagate along the contour length of axonemes at a frequency that depends on ATP concentration (Figure 3C–E and SI Videos S1–S2). We did not observe beating activity for ATP concentrations below the critical value of $[\text{ATP}]_{\text{critical}} = 60 \mu\text{M}$,^{53,54} suggesting that a minimum number of active molecular motors are required to generate rhythmic motion in axonemes. The critical beat frequency was $f_{\text{critical}} \sim 14.6 \text{ Hz}$. Above $[\text{ATP}]_{\text{critical}} = 60 \mu\text{M}$, the beat frequency increases with $[\text{ATP}]$ following modified Michaelis–Menten kinetics, which predicts a plateau with a linear onset at small values of $[\text{ATP}]$: $f = f_{\text{critical}} + f_{\text{max}}([\text{ATP}] - [\text{ATP}]_{\text{critical}})/(K_m + ([\text{ATP}] - [\text{ATP}]_{\text{critical}}))$, with $f_{\text{max}} = 73.75 \text{ Hz}$ and $K_m = 295.8 \mu\text{M}$.^{53,55}

Axonemes consume ATP and beat at a frequency that decays over time until they stop beating (Figure 3F). The rate of ATP consumption depends on both ATP and axoneme concentration. In our experiments, we estimate to have 6×10^5 axonemes in 10 μL of reactivation solution. At an ATP concentration of 1 mM, axonemes stop beating after 32 min, resulting in an estimated ATP consumption rate of 0.31 nmol/min. Assuming that all 6×10^5 axonemes in the chamber are active and consume ATP, we calculate that 5×10^6 ATP molecules/sec are consumed by a single axoneme. Given the mean beat frequency of 50 Hz, we estimate that $\sim 10^5$ ATP molecules are consumed in one beating cycle.⁵⁶ This averaged consumption rate estimated from our experimental data is comparable to the bulk measurements in the sea urchin sperm⁵⁶ but lower than the value of 2.3×10^5 ATP/beat measured at the single-axoneme level by Chen *et al.*⁵⁵ This discrepancy can probably be related to the assumption that 100% of axonemes are reactivated, which is not the case even under ideal experimental conditions. Normally, the isolation and demembration process results in a mixed population of active, nonactive, and fragmented axonemes and a 100% reactivation is never achieved. Therefore, single-flagellar experiments, such as those performed by Chen *et al.*,⁵⁵ are more accurate in determining ATP consumption rates.

Reactivation of Axonemes with Light. Next, we combined the light-driven ATP generation module with isolated and demembrated axonemes, as schematically shown in Figure 4A. We first illuminated the energy module for various time intervals between 0 to 45 min before mixing the functionalized vesicles with axonemes. Higher ATP concentrations are produced by illuminating the energy module for longer periods. While illumination with a 5W microscope light generates up to 213 μM ATP, a 50W white light LED lamp produces up to 330 μM ATP after 45 min of illumination (Figure 4B,C). Synthesized ATP reactivates axonemes (SI,

Videos S3 and S4) at a frequency that depends on $[\text{ATP}]$ (SI, Video 5). The mean beat frequency as a function of $[\text{ATP}]$ follows the Michaelis–Menten scaling with $f_{\text{max}} = 50.80 \text{ Hz}$ and $K_m = 7.14 \mu\text{M}$ (Figure 4D). Interestingly, we observed that illumination with the microscope light for 1 min, corresponding to 1 μM ATP, was sufficient to reactivate axonemes at a beat frequency of around 22 Hz. This is rather surprising because the minimum critical ATP concentration required to reactivate axonemes in our pure ATP experiments was 60 μM (Figure 3E). We attribute this discrepancy to several factors: (1) In the vicinity of axonemes, ATP is constantly synthesized and subsequently consumed by dynein molecular motors. ATP is known to inhibit the activity of ATP synthase and local consumption of ATP by axonemes can enhance the rate of ATP production. Therefore, the ATP concentration in the presence of axonemes might be slightly higher. (2) Functionalized vesicles may accumulate/adhere to the demembrated axonemes resulting in higher ATP concentrations around them. Our experiments with fluorescently labeled vesicles did not confirm any significant accumulation of vesicles along the entire contour length of axonemes, but we occasionally observed attachment of vesicles to a part of axonemes (SI, Video S6). (3) The last but most important factor is ADP. In contrast to the experiments with pure ATP, experimental system with axonemes and energy module contains a significant amount of ADP (1.6 mM). According to the literature,^{57–59} ADP can bind to noncatalytic sites of dynein motors, enhancing the overall energy efficiency of chemical to mechanical energy transformation (Figure 5A,B). In fact, the activating role of ADP in the regulation of on–off switching of dynein arms in flagellar motility has been the subject of several

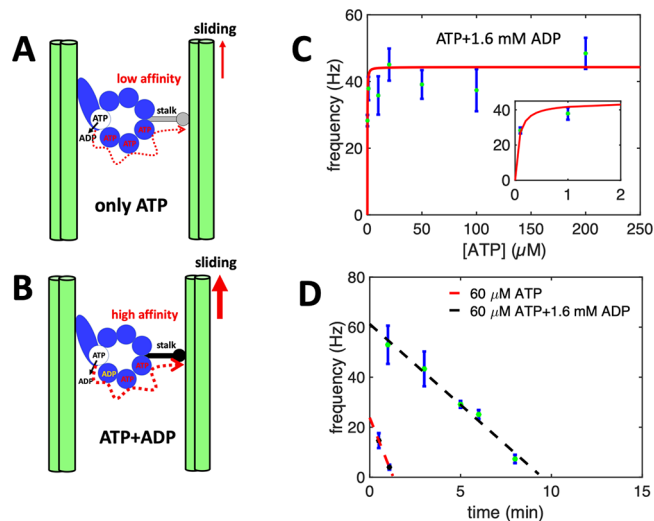


Figure 5. Activating role of ADP. (A,B) A hypothetical mechanism introduced in refs 57, 63 illustrating the regulatory effect of ADP on the binding affinity of dynein to the B-subtubule of the outer MT doublets. Hence, in the presence of ADP which binds to a noncatalytic site, dynein is more efficient in generating the sliding force. (C) Pure ATP experiments supplemented with 1.6 mM ADP confirm the activating role of ADP at low ATP concentrations. Note that axonemes are reactivated even at a very low ATP concentration of 0.1 μM . (D) Comparison of two sets of experiments with and without ADP at fixed ATP concentration of 60 μM . While without ADP, axonemes stop beating after 2 min, with 1.6 mM ADP, axonemes beat with higher frequencies and are active for a longer time.

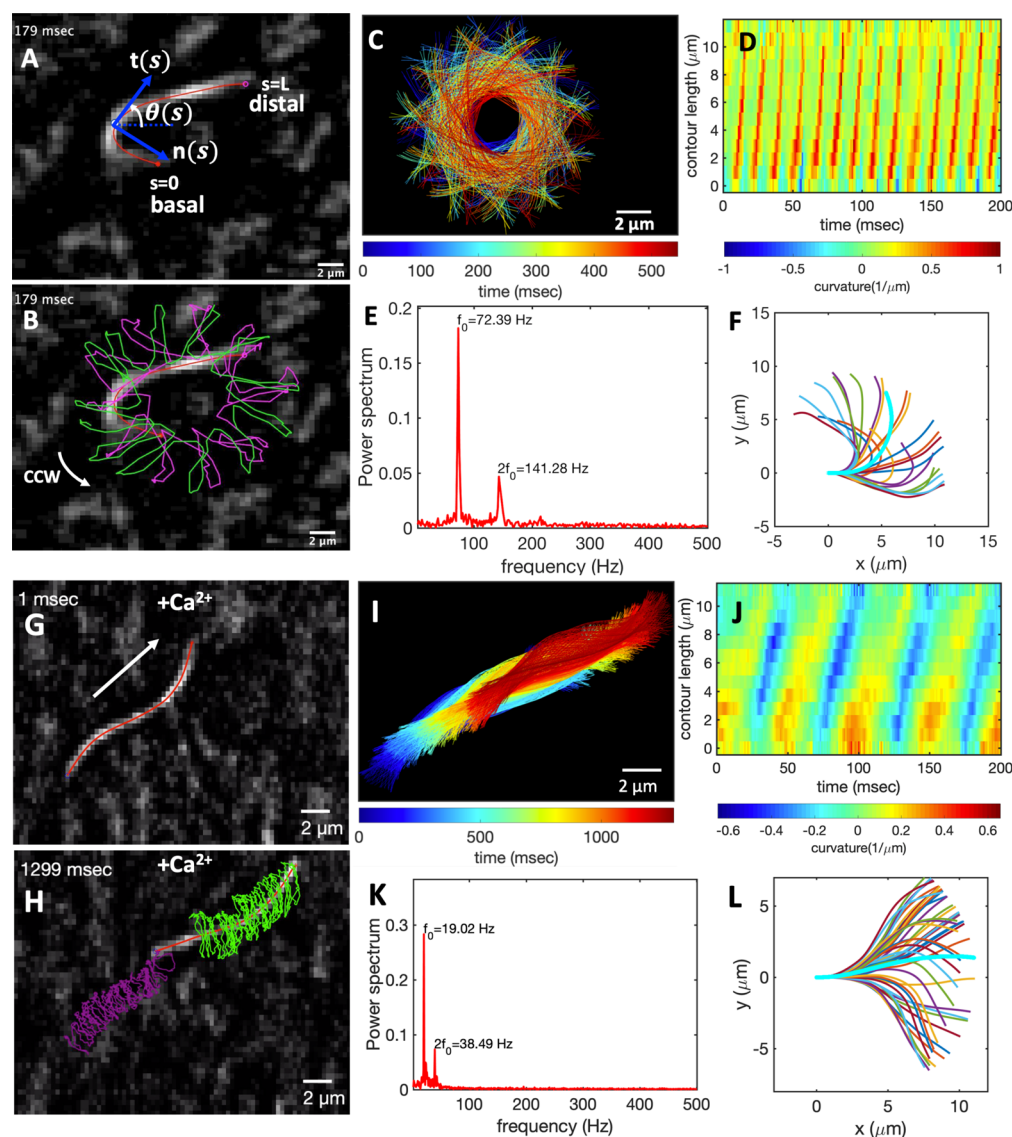


Figure 6. Light-driven reactivation of axonemes with and without calcium. (A) An actively beating axoneme fueled by $213 \mu\text{M}$ ATP produced during preillumination of the energy module for 45 min by microscope light (SI, Video S4). (B) As axoneme beats with frequency of 72 Hz, it rotates CCW with a slower frequency of 2 Hz. Magenta and green trajectories show the traces of distal and basal ends of the axoneme, respectively. (C) Color-coded time projections of the beating axoneme showing the circular swimming path. (D) Curvature waves propagate along the contour length from the basal toward the distal end. (E) Power spectrum of curvature waves shows dominant peaks at $f_0 = 72 \text{ Hz}$ and at second harmonic $2f_0$. (F) Configurations of the axoneme at different time points are translated and rotated such that the basal end is at $(0, 0)$ and the orientation of the tangle vector at the basal end is in the \hat{x} direction. Static curvature of this axoneme is $\sim 0.2 \mu\text{m}^{-1}$. (G–L) A separate experiment with 1 mM CaCl_2 which reduces the static curvature of the axoneme to $0.01 \mu\text{m}^{-1}$ (compare filaments with cyan color in panels F and L). Thus, the axoneme swims in a straight trajectory (compare panels C and I) utilizing $\sim 1 \mu\text{M}$ ATP synthesized by energy of microscope light without 45 min preillumination step. At such a low ATP concentration, axoneme beats at a slower frequency of 19 Hz (SI, Video S7).

studies in the past years.^{60–62} To confirm the activating effect of ADP, we repeated our pure ATP experiments with 1.6 mM ADP. Remarkably, we observed reactivation of axonemes even at a very low ATP concentration of $0.1 \mu\text{M}$ (Figure 5C). Furthermore, in the presence of ADP, ATP consumption rate was much lower. This is shown in Figure 5D for the fixed ATP concentration of $60 \mu\text{M}$ with 1.6 mM ADP, where in comparison to the experiment without ADP, axonemes beat at higher frequencies and for a longer period of time.

ATP consumed by axonemes is replenished by the continuous microscope illumination while we image the sample, establishing an energy production-consumption cycle. Once the microscope light is turned off, the time required for

the synthesized ATP to be hydrolyzed depends on both ATP and axoneme concentrations. Exemplary, in a $10 \mu\text{L}$ solution with 6×10^5 axonemes, $60 \mu\text{M}$ ATP which is produced in a 10 min preilluminated energy module, will be consumed in ~ 10 min. This is consistent with Figure 5D with $60 \mu\text{M}$ commercial ATP and 1.6 mM ADP. Once ATP is depleted, turning on the microscope light for 1 min generates $\sim 1 \mu\text{M}$ ATP, which is sufficient to reactivate axonemes but at a lower frequency of $\sim 20 \text{ Hz}$.

Figure 6A–C shows exemplary oscillatory motion of an axoneme in response to ATP generated by the light-driven energy module which is preilluminated with the microscope light for 45 min (SI, Video S4). We observed bending

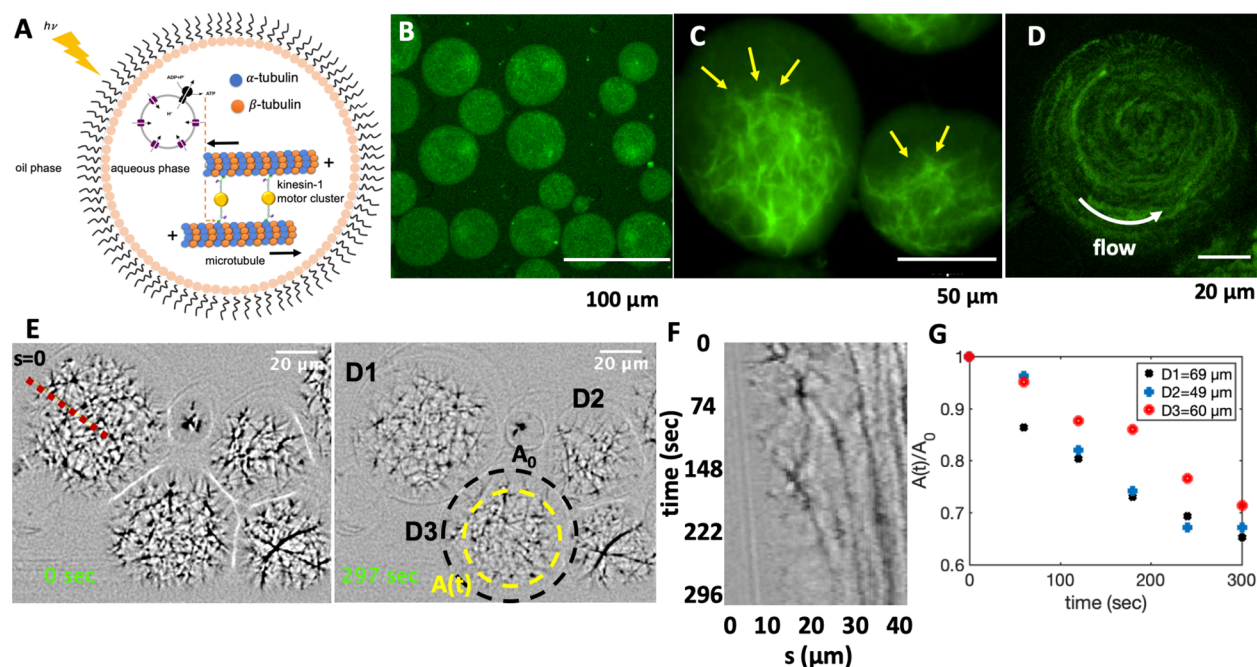


Figure 7. Cell-like confinement of MTs, kinesin-1 molecular motors, and light-switchable energy module. Kinesin-1 is a dimer with two heads which forms cluster through streptavidin. (A) Schematic representation of the MTs/kinesin-1 network coencapsulated with functionalized vesicles inside water-in-oil droplets. Upon illumination, synthesized ATP provides fuel for the kinesin-1 molecular motors, which are plus-end directed motors that exert contractile stresses by sliding MTs relative to each other. (B) MTs/kinesin-1 network shows a relatively uniform distribution shortly after encapsulation. (C) Snapshots of network contraction after 40 min. The yellow arrows indicate network contraction. (D) Rotational flows observed in some of the droplets during network contracts. (E) Snapshots of contractile active network at two different time points. The yellow circle shows the area covered by the network after ~ 5 min. (F) Space-time plot showing network contraction along the red dashed line in panel E. (G) Relative reduction of network area over time for three droplets shown in panel E. A_0 is the initial area of the network before contraction, as marked with a black circle in panel D.

deformations propagating at a frequency of up to 72 Hz from the basal end toward the distal tip (Figure 6D,E). To analyze the oscillatory motion of axonemes, we first tracked the filaments using the gradient vector flow technique^{64,65} (Figure S7 and Materials and Methods) and quantified the curvature waves using the Frenet equations in a plane:⁶⁶

$$\frac{d\mathbf{r}(s)}{ds} = \hat{\mathbf{t}}(s) \quad \text{and} \quad \frac{d\hat{\mathbf{t}}(s)}{ds} = \kappa(s)\hat{\mathbf{n}}(s) \quad (1)$$

Here $\hat{\mathbf{t}}(s)$ is the unit tangent vector to the axoneme, $\hat{\mathbf{n}}(s)$ is the unit normal vector, and $\kappa(s)$ is the curvature (see Figure 6A). We define $\theta(s)$ as the angle between the tangent vector at contour length s and the x -axis, then $\kappa(s) = d\theta(s)/ds$, which is plotted in Figure 6D. Furthermore, considering reactivated axonemes as an example of a self-sustained biological oscillator, it is possible to perform a principal mode analysis⁶⁶ and define a phase which facilitates a quantitative dynamic analysis of axonemal shape. The interested reader is referred to the Materials and Methods and Figure S8.

Finally, to characterize the mean shape of axonemes, which is a circular arc (the filament in cyan color in Figure 6F), we translated and rotated configurations of an actively beating axoneme such that the basal end defined as $s = 0$ is at position $(0, 0)$ and the tangent vector at the basal end is orientated in the \hat{x} direction (Figure 6F). Figure 4E illustrates that curvature of the mean shape of axonemes does not depend significantly on ATP concentration.⁵³ This static curvature ($\sim 0.16 \mu\text{m}^{-1}$), which leads to an asymmetric waveform and causes a circular swimming trajectory of axonemes (Figure 6B,C), is comparable to the values obtained in our pure ATP experiments

with and without ADP (see Figure S9 and ref 53) and can be reduced by adding calcium ions to the reactivation buffer.⁶⁷ Calcium ions are known to play a crucial role in shaping and controlling flagellar waveforms.^{67,68} A calcium-responsive protein at the interface between radial spoke RS1 and inner dynein arm IDAa is calmodulin (see Figure 1B and Figure 5 in ref 69). Electron cryotomography (cryo-EM) data⁶⁹ show that the structure of calmodulin undergoes a Ca^{2+} -dependent conformational change, which could affect the RS1-IDAa interaction, therefore modulating the flagellar beat from an asymmetric to a symmetric waveform. Figure 6G–L shows an exemplary axoneme with a symmetric waveform in which the static curvature is reduced to $0.01 \mu\text{m}^{-1}$ by addition of 1 mM CaCl_2 . This axoneme with nearly ten times reduced static curvature swims in a straight line (SI, Video S7). We emphasize that beat frequency, static curvature, and amplitude of curvature waves are three important factors which determine the swimming trajectory of an axoneme in the ambient fluid, and variations in these parameters directly affect the swimming dynamics (see Materials and Methods, Figure S10, and Video S8 for simulations of swimming trajectory).

Light-Driven Contraction of MTs/Kinesin-1 Network.

We further tested the suitability of a light-switchable energy module for encapsulation of *in vitro* motility assays constituted of microtubules and force-generating molecular motors. This assembly under illumination provides an energetically autonomous system that has the potential to advance the development of synthetic cells (Figure 7A).

We verified the activity of the motor-driven filamentous network by characterizing its activity in water-in-oil droplets of

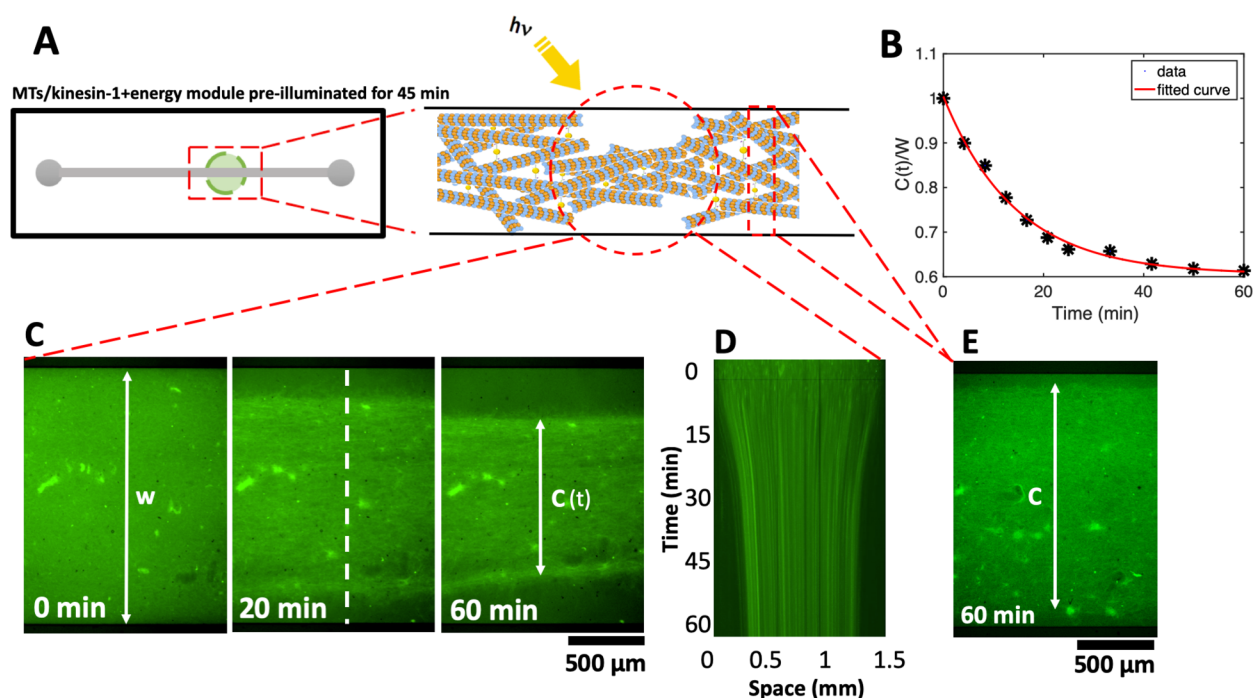


Figure 8. Photostimulated contraction of MTs/kinesin-1 network inside a millifluidic device (SI, Video S10). (A) Schematic representation of the millifluidic device highlighting the area illuminated with discontinuous microscope light. Taxol-stabilized MTs are mixed with kinesin-1 motors and a preilluminated energy module prior to injection into a millifluidic channel. (B,C) Over time, as available ATP in the energy module is consumed by force-generating kinesin-1 motors, discontinuous microscope illumination compensates for ATP consumption and filamentous network contracts up to 38%. Quantitative analysis of the width of the contracted network in the illuminated region shows an exponential decay over time. The initial width of the network is $W = 1.5$ mm. (D) Space-time plot demonstrating the network contraction along the white dashed line drawn in part C. (E) In the nonilluminated areas, where ATP is only consumed but not replenished, we monitored a reduced contractility of up to 10% after 1 h.

various diameters. Figure 7 and Video S9 show the contraction of MTs/kinesin-1 network mixed with the preilluminated photosynthetic energy module and encapsulated in a microfluidic device (see Materials and Methods and Figure S11 for the design of the set up). We observed a relatively uniform distribution of the network immediately after encapsulation, as shown in Figure 7B. Over time, ATP produced in preilluminated energy module drives the activity of molecular motors allowing them to cross-link and slide neighboring microtubules against each other. This results in a net force that contracts the network.⁷⁰ A snapshot of the contracted network after 40 min is shown in Figure 7C. Microtubule–microtubule sliding also causes rotational flows within droplets, which were occasionally observed in our experiments, as shown in Figure 7D and discussed in ref 71 (SI, Video S9). We quantified the contractile activity of the system by analyzing the relative reduction in the network area over time. Figure 7E–G shows that network contraction within droplets of different diameters occurs at similar time-scales.

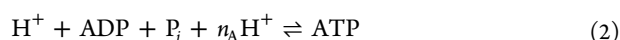
We note that discontinuous illumination of the sample by microscope light every 5 s during imaging produces ATP, which compensates consumption of ATP by molecular motors. We verified this circulating energy-production and consumption in the system by a separate experiment where we confined the MTs/kinesin-1 network in a millifluidic device with rectangular cross-section (30 mm \times 1.5 mm \times 0.1 mm). The aim is to compare the contractility of the network in areas illuminated by discontinuous microscope light, where ATP is consumed and produced, *versus* nonilluminated areas, where ATP is only consumed but not replenished by light. Figure 8

shows that initially the active network fills the entire 3D volume of the channel. Kinesin-1 motors consume ATP synthesized in preilluminated energy module, generating active stresses which result in network contraction (Figure 8B–D). As kinesin-1 motors consume ATP, discontinuous microscope illumination compensates ATP consumption and motor-driven network contraction reaches its maximum value of 38.6% within 60 min, as displayed in Figure 8B–D and Video S10. ATP production is maintained only in areas illuminated by the microscope light, causing stronger network contraction compared to nonilluminated regions in the channel. We observed a reduced contractility of about 10% in the adjacent volume near the region illuminated by the microscope light, as shown in Figure 8E. These experiments suggest that the application of patterned illumination in a filamentous network can impose different contraction-maps with spatial gradient. It also demonstrates the efficiency of the light-driven energy module for controlled and localized ATP production, and highlights the potential application of this system in the field of synthetic biology with the ultimate goal of building an artificial cell.

DISCUSSION

Our experiments demonstrate that light-switchable photosynthetic liposomes can drive ATP-dependent activity of axonemal dyneins, which serve as tiny protein machinery to convert chemical energy into mechanical work in the form of a rhythmic beating pattern. We used light energy to dynamically synthesize ATP, allowing us to control beating frequency of axonemes as a function of illumination time. We illuminated

the functionalized vesicles at two different light intensities: a 5 W microscope lamp and a 50 W white LED lamp, which can generate up to 213 μM and 330 μM ATP, respectively, after 45 min of illumination (compare Figure 4B and C). We note that bacteriorhodopsin (bR) has a purple color and therefore absorbs green light (500–650 nm) most efficiently. Since bR has a broad excitation spectrum, proton pumping is also possible using white light or red light for excitation. Our results indicate a nonlinear dependence of ATP synthesis rate on light intensity. To generate ATP, ADP is phosphorylated *via* the F_0F_1 -ATP synthase reaction:



where $n_A \sim 2-3$ is the number of protons transported from the inside to the outside of the vesicle each time the reaction of ATP formation takes place, and H^+ indicates hydrogen ions transferred across the vesicle membrane (Figure 2A). The rate of ATP formation according to ref 72 can be expressed as

$$r \propto \exp\left(\frac{-\Delta G_{0,\text{ATP}} - n_A \Delta G_{\text{H}}}{RT}\right) \frac{K_{\text{Mg-ADP}}}{K_{\text{Mg-ATP}}} [\text{mADP}][\text{P}_i] - (1M)[\text{mATP}] \quad (3)$$

where R is the universal gas constant, T is the temperature, $[\text{mADP}]$, $[\text{P}_i]$, and $[\text{mATP}]$ are the concentrations of magnesium-bound ADP, P_i and magnesium-bound ATP and the factor $(1M)$ is used to balance the units. $K_{\text{Mg-ATP}}$ and $K_{\text{Mg-ADP}}$ are the equilibrium dissociation constants for ATP and ADP binding with Mg^{2+} , and $\Delta G_{0,\text{ATP}} = -36.03$ kJ/mol is the standard Gibbs free energy for ATP formation. Finally, $\Delta G_{\text{H}} = F\Delta\Psi + RT \ln \frac{[\text{H}^+]_{\text{out}}}{[\text{H}^+]_{\text{in}}}$, where $\frac{[\text{H}^+]_{\text{out}}}{[\text{H}^+]_{\text{in}}}$ is the ratio of external to internal hydrogen ion concentration, $\Delta\Psi$ is the membrane potential, and F is the Faraday's constant. The concentration of protons inside the vesicles depends on proton pumping by bacteriorhodopsin, but also on proton pumping by ATP synthase, proton leak across the membrane and buffer capacity inside the vesicles. Only the rate of proton pumping by bacteriorhodopsin can be considered to be approximately linearly dependent on light intensity,⁷³ but in general the rate of ATP production r will be nonlinearly dependent on the light intensity. Some experimental studies on similar systems^{48,74} have confirmed nonlinear dependence of ATP synthesis rate on light intensity and have even shown saturation at higher light intensities, reminiscent of Michaelis–Menten-type kinetics.

In our reactivation experiments with the energy module, we observed that the minimum ATP concentration required to reactivate axonemes is much smaller than the critical value in control experiments with pure commercial ATP (compare Figures 3E and 4D). Multiple factors potentially account for this discrepancy: (1) ATP is known to be one of the inhibitors of ATP synthase activity, and local consumption of ATP by axonemes can enhance the conversion rate of ADP to ATP, resulting in locally higher ATP concentrations near axonemes. To verify the inhibitory effect of ATP, we coupled the light-driven ATP module with a metabolic module by combining the light-driven ATP production with the consumption of glucose, as schematically shown in Figure S12A. As a proof of concept, a relatively simple metabolic reaction was chosen: Hexokinase converts glucose (G) to glucose-6-phosphate (G-6-P) under the consumption of one molecule of ATP.⁴⁹ Our

measurements confirm that in the metabolically coupled system, the ATP production rate is 18% higher than the detected ATP production rate in the control experiments; see Figure S12B,C and Materials and Methods. (2) The attachment of functionalized vesicles to the demembrated axonemes can generate higher ATP concentrations around the axonemes. Although we did not observe vesicle accumulation along the entire contour length of axonemes, we occasionally observed vesicles attaching to some parts of axonemes (SI, Video S6). (3) The most important factor which explains the discrepancy is the presence of ADP. In contrast to the experiments with pure ATP, the experimental system with light-to-ATP energy module was additionally supplemented with ADP at a concentration of 1.6 mM. Remarkably, our experiments with pure ATP supplemented with 1.6 mM ADP confirm the activation role of ADP in reactivation of axonemes at low ATP concentrations below 60 μM (see Figure 5C). We observed beating activity even at 0.1 μM ATP which is much smaller than critical value of 60 μM in pure ATP experiments without ADP. According to the literature, ADP plays a crucial role in axonemal motility.^{15,57,60,75} For example, Inoue and Shingyoji⁵⁷ investigated the influence of ADP and ATP on regulation of dynein activity to produce inter-microtubule sliding in flagella. Dynein motors have four ATP binding sites in each of their heavy chains (Figure 5A,B). Only one of these sites is catalytic and responsible for the conversion of ATP to ADP while the other three sites are noncatalytic. According to this study,⁵⁷ one of these sites can be occupied by ADP. In the absence of ADP, the mean flagellar velocity was lower than with ADP. Moreover, in the presence of ADP, the mean velocity reaches its steady state value faster than in the absence of ADP, suggesting that ADP increases the efficiency of energy transduction. This is consistent with our experiments with ADP in which much lower ATP concentrations were required for axonemal beating. In addition, beating frequency with ATP and ADP reaches saturation at very low ATP concentrations, whereas kinetics with pure ATP is much slower (compare Figure 3E with Figures 4D and 5C). Now, considering that very low ATP concentrations around or below 1 μM ATP (active form is actually ATP-Mg) are required to observe axonemal beating, the question arises whether ADP can bind to more than one of the noncatalytic binding sites in dynein (see Figure 5B).

Self-sustained motility systems that rely on light energy as a primary source of energy (or for *in vivo* applications, chemical energy such as glucose³⁵), may have potential applications in the area of synthetic swimmers and targeted drug delivery. In our preliminary experiments, to build a sperm-like swimmer, we attached a cargo (1 μm beads) to the distal end of an axoneme that can be propelled by external illumination (Figure S13A,B and Video S11). In light-to-ATP or chemical-to-ATP energy modules, enhanced attachment of functionalized vesicles to the contour length of axonemes could be beneficial to this system⁷⁶ because ATP will be produced locally around axonemes and consumed subsequently by dynein molecular motors (Figure S13C). These functionalized vesicles attached to an axoneme can also be used as drug carriers.^{77–79} Extensive experiments in the future are necessary to investigate the feasibility of these ideas for biomedical applications.

Lastly, we have shown that functionalized artificial liposomes capable of continuous production of ATP in response to light as an external stimulus, can serve as an efficient energy source for *in vitro* microtubule motility assays in which kinesin-1

molecular motors are actively engaged in generating and sustaining active stresses in the network. In these experiments, preillumination of the energy module for 45 min generates sufficient ATP needed for motor-driven network contraction. Discontinuous microscope illumination every 5 s replenishes the consumed ATP and the MTs/kinesin-1 network confined in a millifluidic device contracts by up to 38% within 60 min, following an exponential trend (Figure 8B). The encapsulated MTs/kinesin-1 network contracts similarly, but in a much faster time scale of ~ 5 min. Once contracted, the network which is highly cross-linked by kinesin-1 motors and randomly oriented, remains contracted even after the microscope light is turned off and the ATP is depleted. Thus, a light-controllable reversible switch between contracted and relaxed states does not occur in our experiments. We also performed control experiments with commercial ATP, to confirm that a contracted network does not relax back once ATP is completely consumed (see SI, Figure S14 and Video S12 for a 19 h long experiment with 1 mM pure ATP). Further, the preillumination of the energy module is a requirement for the network contraction. Indeed, a MTs/kinesin-1 network mixed with a non-preilluminated energy module does not contract, indicating that ATP produced by discontinuous microscope illumination is insufficient to generate critical contractile stresses in the network (SI, Video S13).

Our developed scheme of circulating energy consumption and production could serve as a potential platform to encapsulate constituent elements such as actin, microtubules, and various regulatory components inside functionalized lipid vesicles to provide ATP in an optically controllable self-sustained manner. ATP-driven motor activity in filamentous biopolymer networks is expected to generate active forces that drive morphological deformation in liposomes and further contributes to the challenging goal of bottom-up creation of an artificial cell.

MATERIAL AND METHODS

Expression and Purification of Membrane Proteins.

Purple membrane was isolated from *Halobacterium salinarum* (strain S9) as described by Oesterhelt.⁴⁶ His-tagged *E. coli* F₀F₁-ATP synthase (EF₀F₁) was expressed from the plasmid pBWU13- β His in the *E. coli* strain DK8 (Δ uncBEFHAGDC) and purified by Ni-NTA affinity chromatography as previously described by Ishmukhametov *et al.*⁴⁵

Preparation of Lipid Vesicles for Light-Driven ATP Production. Vesicles were formed by film rehydration method followed by extrusion. Ten mg of dissolved phosphatidylcholine lipid was deposited in a glass vial and solvent was removed using a gentle stream of nitrogen. Thin lipid films were rehydrated in HMDEKP buffer (30 mM HEPES-KOH, 5 mM MgSO₄, 1 mM DTT, 1 mM EGTA, 50 mM potassium acetate, 1% PEG, pH 7.4) to a final concentration of 10 mg/mL by vortexing. To transform multilamellar vesicles into unilamellar vesicles, the suspension was subjected to 5 freeze–thaw cycles. Each cycle consisted of freezing in liquid nitrogen, thawing in a 35 °C water bath and vortexing for 30 s. Suspensions were extruded 11 times through a 100 nm pore size polycarbonate membrane (Whatman) to form uniform vesicles.

Coreconstitution of EF₀F₁-ATP Synthase and bR. 100 μ L of preformed vesicles were mixed with 0.1 μ M EF₀F₁-ATP synthase and 9.9 μ M bR in form of membrane patches. 0.8% Triton X-100 was added under vortexing to partially solubilize

the vesicles. After 15 min incubation in the dark under gentle shaking, 80 mg of wet SM-2 Bio-Beads were added and the solution was incubated for further 60 min under constant shaking in the dark.

Light-Induced ATP Production. For measurement of light-induced ATP production, 25 μ L of coreconstituted vesicles were diluted in 250 μ L of HMDEKP buffer (30 mM HEPES-KOH, 5 mM MgSO₄, 1 mM DTT, 1 mM EGTA, 50 mM potassium acetate, pH 7.4) supplemented with 1% (w/v) polyethylene glycol ($M_w = 20$ kg mol⁻¹) and 1.6 mM ultra pure ADP (Cell Technologies). The reaction was started by illumination with a 50 W green LED lamp or a 5 W microscope light. Aliquots of 25 μ L were taken at the beginning every 1 min and later on every 5 min from the reaction mixtures and the reaction was stopped by addition of the same volume of trichloroacetic acid (40 g/L). The ATP concentration was measured with the luciferin/luciferase assay and calibrated by addition of 10 μ L ATP (7.8 μ M) after each measurement.

Isolation and Reactivation of Flagella with Light-Driven Energy Module. Axonemes were isolated from wild-type *Chlamydomonas reinhardtii* cells, strain SAG 11–32b. They were grown axenically in TAP (tris-acetate-phosphate) medium on a 12 h/12 h day-night cycle. Flagella were isolated using dibucaine,^{80,81} then purified on a 25% sucrose cushion, and demembrated using detergent NP-40 in HMDEK solution supplemented with 0.2 mM Pefabloc. The membrane-free axonemes were resuspended in HMDEK buffer plus 1% (w/v) polyethylene glycol ($M_w = 20$ kg mol⁻¹), 0.2 mM Pefabloc, 20% sucrose and stored at -80 °C. To perform reactivation experiments, we thawed axonemes at room temperature and kept them on ice and used them for up to 2 h. Next, we diluted axonemes in HMDEKP reactivation buffer (HMDEK plus 1% PEG) which contains light-driven energy module. We infused them into 100 μ m deep flow chambers, built from cleaned glass and double-sided tape. Glass slides are treated with casein (2 mg/mL in HMDEKP buffer) for 5 min before use to avoid axoneme-substrate attachment. For experiments with calcium, 1 mM CaCl₂ was added to HMDEKP reactivation buffer.

Axoneme Contour Tracking. We imaged reactivated axonemes using phase-contrast microscopy (100 \times objective, imaging frequency of 1000 fps). To increase the signal-to-noise ratio, we first inverted phase-contrast images and then subtracted the mean-intensity of the time series. This background-subtraction method increased the signal-to-noise ratio by a factor of 3.⁵³ Next, we applied a Gaussian filter to smooth the images. Tracking of axonemes is done using gradient vector flow (GVF) technique.^{64,65} For the first frame, we select a region of interest that should contain only one actively beating axoneme. Then, we initialize the snake by drawing a line polygon along the contour of the axoneme in the first frame (see Figure S7). This polygon is interpolated at N equally spaced points and used as a starting parameter for the snake. The GVF is calculated using the GVF regularization coefficient $\mu = 0.1$ with 20 iterations. The snake is then deformed according to the GVF where we have adapted the original algorithm by Xu and Prince for open boundary conditions. We obtain positions of N points along the contour length s of the filament so that $s = 0$ is the basal end and $s = L$ is the distal side, where L is the total contour length of filament. The position of filament at s_i is denoted by $r(s_i) = (x(s_i), y(s_i))$.

Simulations with Simplified Waveform. To investigate the influence of frequency, static curvature and amplitude of the curvature waves on swimming trajectory of axoneme, we performed simulations with a simplified form of curvature waves, which is a superposition of a dynamic mode (cosine wave) and a static mode (a circular arc):⁵²

$$C(s, t) = C_0 + C_1 \cos(2\pi(s/\lambda - f_0 t)) \quad (4)$$

where C_0 is the static curvature, C_1 is the amplitude of the dynamic mode, λ is the wavelength and f_0 is the beating frequency. Minus sign in term $-f_0$ generates waves that propagate from $s = 0$ (basal end) to $s = L$ (distal tip).

As shown in Figure S10A,B, in the absence of a static curvature ($C_0 = 0$), flagella swims on a straight path and faster beating flagella swims a longer distance. For a nonzero static curvature ($C_0 \neq 0$), which is the case for isolated axonemes in our experiments, flagella swims on a circular path, as shown in Figure S10C. Note that in our experiments, adding calcium reduces the static curvature C_0 in a dose dependent manner, approaching to almost zero at 1 mM CaCl_2 concentration (see Figure 6K).

In these simulations, we compute drag force density felt by each flagellum in the framework of resistive-force theory.⁸² In this theory, each flagellum is divided to small cylindrical segments moving with velocity \mathbf{u}_\perp and \mathbf{u}_\parallel in the body-frame and propulsive force is proportional to the local centerline velocity components of each segment in parallel and perpendicular directions.

Mode Analysis. We used the Frenet equations to analyze axoneme's shapes in a plane:⁶⁶

$$\frac{d\mathbf{r}(s)}{ds} = \hat{\mathbf{t}}(s) \quad \text{and} \quad \frac{d\hat{\mathbf{t}}(s)}{ds} = \kappa(s)\hat{\mathbf{n}}(s) \quad (5)$$

Here $\hat{\mathbf{t}}(s)$ is the unit tangent vector to the axoneme, $\hat{\mathbf{n}}(s)$ is the unit normal vector and $\kappa(s)$ is the curvature (see Figure 6A). We define $\theta(s)$ to be the angle between the tangent vector at contour length s and the x -axis, then $\kappa(s) = d\theta(s)/ds$. Note that we rotate and translate the axoneme such that point $s = 0$ (basal end) is at position $(x, y) = (0, 0)$ and the local tangent vector at $s = 0$ is in the \hat{x} direction, giving $\theta(0) = 0$. Following Stephens *et al.*,⁶⁶ we performed principal mode analysis by calculating the covariance matrix of angles $\theta(s)$ defined as $C(s, s') = \langle (\theta(s) - \langle \theta \rangle) (\theta(s') - \langle \theta \rangle) \rangle$. We then calculated the eigenvalues λ_n and the corresponding eigenvectors $V_n(s)$ of this matrix, showing that superposition of 4 eigenvectors corresponding to four largest eigenvalues can describe the axoneme's shape with high accuracy,

$$\theta(s, t) \approx \sum_{n=1}^4 a_n(t)V_n(s) \quad (6)$$

Here the four variables $a_1(t), \dots, a_4(t)$ are the amplitudes of motion along different principal components and are given by $a_n(t) = \sum_s V_n(s) \theta(s)$.

First, we used data of tracked axonemes obtained by GVF technique^{64,65} to compute $\theta(s, t)$ which is defined as the angle between the local tangent vector and \hat{x} axis (see Figure 6A). Next, we calculated covariance matrix $C(s, s')$ of fluctuations in the angle which has only a small number of nonzero eigenvalues. The color map of this matrix presented in Figure S8A shows that $C(s, s')$ has an effective reduced dimensionality. As shown by Stephens *et al.*⁶⁶ for *C. elegans*, only four eigenvectors $V_n(s)$ ($n = 1, \dots, 4$) corresponding to the first four

largest eigenvalues of covariance matrix are enough to describe axoneme's shape with high accuracy (Figure S8G–I). The first two motion amplitudes $a_1(t)$ and $a_2(t)$ are shown in Figure S8C,D and the corresponding probability density is presented in Figure S8B (see Materials and Methods). Considering reactivated axonemes as an example of a self-sustained biological oscillator, it is possible to define a phase which facilitates quantitative analysis. To present instantaneous state of an oscillator, we consider the stable limit cycle that forms in $a_1 - a_2$ plane, and define phase as a monotonically increasing function $\phi(t)$ (Figure S8B,F). For a given limit cycle, phase ϕ rotates uniformly in the phase space such that $d\phi/dt = 2\pi f_0$, where f_0 is the autonomous beating frequency of axoneme (Figure S8F).

Motile Bundle Solution. The motile bundle solution was obtained by mixing taxol-stabilized microtubules and an active mixture (AM) containing molecular motors kinesin-1 clustered in multimotors configuration by using streptavidin. Kinesin 401 was purified as previously published^{83,84} and the kinesin-streptavidin complexes were prepared by mixing 0.2 mg/mL kinesin 401, 0.9 mM dithiothreitol (DTT), 0.1 mg/mL streptavidin dissolved in M2B (80 mM PIPES, adjusted to pH = 6.9 with KOH, 1 mM EGTA, 2 mM MgCl_2) and incubated on ice for 15 min. The AM was obtained by mixing 2.4 mM Trolox, 16.6 μL 3% PEG, 5.5 μL M2B, 3.25 μL DTT (10 mM), the oxygen scavenger (0.2 mg/mL glucose oxidase (Sigma G2133), 0.05 mg/mL catalase (Sigma C40)), 0.5 mg/mL glucose, and 4 μL kinesin-1-streptavidin clusters. The microtubule polymerization mixture (MTs) was prepared by mixing 27 μM porcine brain tubulin (1:5 labeled tubulin) in M2B with 5 mM MgCl_2 , 1 mM GTP, 50% DMSO and 0.3% PEG. This solution is kept in the oven for 30 min by 37 °C and diluted up to 200 μL with M2B and 7 μM taxol. The final mixture was prepared by mixing polymerized MTs, AM, and light-driven ATP module in different amounts depending on the experimental set up.

Encapsulation of MTs/Kinesin-1 Network Assembled with Photosynthetic Vesicles. The feasibility of the proposed concept, toward building artificial cells, was demonstrated by encapsulation (water-in-oil droplets, w/o) of MTs/kinesin-1 mixed with preilluminated ATP module by droplet microfluidic technique (see next section). Sample containing the MTs/kinesin-1 and 45 min preilluminated ATP module with volume ratio of 1:20 v/v (ATP module:MTs mixture) was pumped into inner-inlets (aqueous phase 1 and 2), while oil phase (FluoSurf 2% in HFE 7500 or FC40) was pumped into outer-inlet. Micro syringe pumps (CETONI BASE 120 with neMESYS pumps, Germany) and glass syringes (Hamilton, USA) were used to inject the aqueous and oil phases. Aqueous phases merged with oil phase at T-junction and generated droplets in a continuous mode of device operation (SI, Figure S11A). Solution of MTs/kinesin-1 and ATP module encapsulated continuously inside water-in-oil droplets at T-junction in a stabilized manner (SI, Figure S11B) and passed from red to green area of the channel where the height of the microchannel is reduced to 13 μm to flatten the droplets, which helps in microscopy (SI, Figure S11C). Further, droplets were entrapped between pillars in observation chamber by applying the pressure at top layer which aided in blocking the forward flow (SI, Figure S11D). Inside observation chamber entrapped-encapsulated MTs/kinesin-1/ATP module were imaged by epifluorescence microscope to

observe contraction of filamentous network. The size of droplets was measured to be $50 \pm 20 \mu\text{m}$ in diameter.

Fabrication of the Microfluidic Device. A schematic presentation of the microfluidic device is shown in Figure S11A. Polydimethylsiloxane (PDMS) microchannel was fabricated using conventional soft lithography. A thin layer of SU-8 3010 photoresists (MicroChem, Newton, MA) was spin-coated onto a Si wafer and patterned *via* ultraviolet exposure through a chrome mask. The device has two different heights (red and green parts in Figure S11A), thereby spin-coating is done in two steps. To fabricate the device, PDMS and the curing agent (SYLGARD 184 Silicone Elastomer) were thoroughly mixed with 10:1 and poured onto the patterned SU-8 mold, followed by degassing to remove bubbles from the PDMS under vacuum pressure. After removing the bubbles and baking at $75 \text{ }^\circ\text{C}$ for 45 min, PDMS was peeled off from the Si substrate, and the microchannels were cut to the appropriate sizes. After punching the inlet and outlet ports, PDMS microchannel was oxygen plasma-bonded (PDC 002, Harrick Plasma, Ithaca, USA) to the glass slide (24 mm \times 60 mm, Menzel Gläser, Germany) for 30 s at 200 W and 200 mTorr. To strengthen the bonding, the device was heated in a $75 \text{ }^\circ\text{C}$ oven for at least 2 min. The height and width of the observation chamber were $13 \mu\text{m}$ and $120 \mu\text{m}$, respectively. Diameter of pillars and pillar to pillar distance inside observation chamber was 30 and $150 \mu\text{m}$, respectively. Microchannel was coated with Novec 1720, 3 M at $120 \text{ }^\circ\text{C}$ for 1 h to make it hydrophobic.

Light-Triggered Glucose Consumption. For measurement of light-triggered glucose consumption a solution containing the ATP module was supplemented with ADP, P_i , glucose and hexokinase. As a control, a solution containing only the ATP module, ADP and P_i was run in parallel. The reaction was started by illumination and samples were taken each 5 min from the reaction mixture. The reaction was stopped by the addition of trichloroacetic acid. The ATP concentration of the sample and the control was calculated and the reaction rates were determined by linear regression (Figure S12A). The suspension containing the ATP module, hexokinase and glucose (ATP module + hexokinase + glucose) showed barely any ATP production (0.01 nM/min). All ATP is constantly consumed by hexokinase to convert glucose in glucose-6-phosphate. This result confirmed that the concentration of hexokinase was chosen high enough and consequentially the glucose consumption reaction was not the limiting step. In contrast, the control sample (ATP module) verified that the ATP module was working and that it produced $58.6 \text{ nM ATP per min}$. The glucose concentration was determined using a highly sensitive glucose assay, which allows the detection of glucose by measuring the fluorescence intensity. Therefore, a standard curve relating glucose concentration and fluorescence signal was taken according to the manufacturers protocol. The glucose concentration over time is shown in Figure S12C. The glucose concentration at $t = 0$ complies well with the concentration of glucose added to the solution ($10 \mu\text{M}$), which certifies that the determination of glucose with the highly sensitive assay worked. The concentration of glucose was decreasing over time with a consumption rate of $-69.4 \text{ nM glucose per min}$. This rate is slightly higher (18%) compared to the detected ATP production rate. This result is as expected because ATP synthase is product inhibited by ATP itself.⁸⁵ Thus, higher

turnover rates are expected when ATP is constantly removed from the system.

■ ASSOCIATED CONTENT

Supporting Information

The Supporting Information is available free of charge at <https://pubs.acs.org/doi/10.1021/acssynbio.1c00071>.

Videos S1–S13 (ZIP)

Figure illustrating the SDS-PAGE of purified proteins; figure demonstrating proteolytic cleavage of reconstituted bR with proteinase K (ProtK); figure illustrating the size distribution of vesicles before and after reconstitution; figure demonstrating the proton pumping of bR as measured by encapsulated pyranine; figure showing the turnover rate of ATP synthase; figure illustrating ATP production with and without DTT; figure demonstrating the gradient vector flow technique; figure showing mode analysis of the reactivated axoneme; figure demonstrating the mean curvature of axonemes reactivated with pure ATP; figure showing the simulations of the axonemes swimming trajectories; figure illustrating the droplet microfluidic setup; figure showing an experiment with Glucose; figure illustrating bead-axoneme swimmer; figure showing the MTs experiments with pure ATP; list of supplementary videos (PDF)

■ AUTHOR INFORMATION

Corresponding Authors

Tanja Vidaković-koch – Max-Planck Institute for Dynamics of Complex Technical Systems, 39106 Magdeburg, Germany; orcid.org/0000-0003-3896-3585; Email: vidakovic@mpi-magdeburg.mpg.de

Azam Gholami – Max-Planck Institute for Dynamics and Self-Organization, 37077 Göttingen, Germany; orcid.org/0000-0002-9332-4551; Email: azam.gholami@ds.mpg.de

Authors

Raheel Ahmad – Max-Planck Institute for Dynamics and Self-Organization, 37077 Göttingen, Germany; orcid.org/0000-0001-8313-7413

Christin Kleineberg – Max-Planck Institute for Dynamics of Complex Technical Systems, 39106 Magdeburg, Germany

Vahid Nasirimarekani – Microfluidics & BIOMICS Cluster UPV/EHU, University of the Basque Country UPV/EHU, 01006 Vitoria-Gasteiz, Spain

Yu-Jung Su – Max-Planck Institute for Dynamics and Self-Organization, 37077 Göttingen, Germany

Samira Goli Pozveh – Max-Planck Institute for Dynamics and Self-Organization, 37077 Göttingen, Germany

Albert Bae – Department of Biomedical Engineering, University of Rochester, Rochester, New York 14627, United States

Kai Sundmacher – Max-Planck Institute for Dynamics of Complex Technical Systems, 39106 Magdeburg, Germany; Otto von Guericke University, 39106 Magdeburg, Germany; orcid.org/0000-0003-3251-0593

Eberhard Bodenschatz – Max-Planck Institute for Dynamics and Self-Organization, 37077 Göttingen, Germany; Institute for Dynamics of Complex Systems, Georg-August-University Göttingen, 37073 Göttingen, Germany

Isabella Guido – Max-Planck Institute for Dynamics and Self-Organization, 37077 Göttingen, Germany; orcid.org/0000-0002-1781-3767

Complete contact information is available at:
<https://pubs.acs.org/10.1021/acssynbio.1c00071>

Author Contributions

#R.A. and C.K. contributed equally.

Author Contributions

A.G. and T.V.K. designed the project. R.A. and A.G. isolated flagella, and C.K. and T.V.K. built the energy module. R.A. and C.K. integrated the energy and flagella motility unit. R.A., V.N., and I.G. performed experiments with microtubules. R.A., C.K., Y.S., S.G.P., and A.G. analyzed the flagella data. A.G. performed the mode analysis of axonemes, and A.B. wrote the Matlab code to track the axonemes and designed the microfluidic set up for droplet generation. R.A., C.K., V.N., I.G., T.V.K., and A.G. wrote the first draft of the manuscript, and all the authors discussed the results and contributed to the revised version.

Notes

The authors declare no competing financial interest.

ACKNOWLEDGMENTS

R.A., V.N., E.B., I.G., and A.G. acknowledge support from the European Union's Horizon 2020 research and innovation programme under grant agreement MAMI No. 766007. C.K., A.B., E.B., K.S., I.G., T.V.K., and A.G. thank MaxSynBio Consortium, which is jointly funded by the Federal Ministry of Education and Research of Germany and the Max Planck Society. We would like to thank the unknown referees for their critical comments, and Anthony Vecchiarelli (Assistant Professor, University of Michigan) and class MCDB 401 ("Building the Synthetic Cell") for conducting a class review of our preprint paper, providing us with constructive and encouraging feedback. A.G. and R.A. also thank M. Lorenz and S. Bank and the Göttingen Algae Culture Collection (SAG) for providing the *Chlamydomonas reinhardtii* strain 11-32b.

REFERENCES

- Otrin, L., Kleineberg, C., Caire da Silva, L., Landfester, K., Ivanov, I., Wang, M., Bednarz, C., Sundmacher, K., and Vidaković-Koch, T. (2019) Artificial organelles for energy regeneration. *Advanced Biosystems* 3, 1800323.
- Göpfrich, K., Platzman, I., and Spatz, J. P. (2018) Mastering complexity: towards bottom-up construction of multifunctional eukaryotic synthetic cells. *Trends Biotechnol.* 36, 938–951.
- Schwille, P., et al. (2018) MaxSynBio: avenues towards creating cells from the bottom up. *Angew. Chem., Int. Ed.* 57, 13382–13392.
- Göpfrich, K., Haller, B., Staufer, O., Dreher, Y., Mersdorf, U., Platzman, I., and Spatz, J. P. (2019) One-pot assembly of complex giant unilamellar vesicle-based synthetic cells. *ACS Synth. Biol.* 8, 937–947.
- Fletcher, D. (2018) Which biological systems should be engineered? *Nature*, DOI: 10.1038/d41586-018-07291-3.
- Pantaloni, D., Le Clairche, C., and Carlier, M.-F. (2001) Mechanism of actin-based motility. *Science* 292, 1502–1506.
- Pollard, T. D., and Borisy, G. G. (2003) Cellular motility driven by assembly and disassembly of actin filaments. *Cell* 112, 453–465.
- Blake, J. R., and Sleight, M. A. (1974) Mechanics of ciliary locomotion. *Biological Reviews* 49, 85–125.
- Wolff, R. (1992) Mucociliary function. *Comp. Biol. Normal Lung* 1, 659–680.

- Faubel, R., Westendorf, C., Bodenschatz, E., and Eichele, G. (2016) Cilia-based flow network in the brain ventricles. *Science* 353, 176–178.
- Harris, E. H. (2001) *Chlamydomonas* as a model organism. *Annu. Rev. Plant Physiol. Plant Mol. Biol.* 52, 363–406.
- Silflow, C. D., and Lefebvre, P. A. (2001) Assembly and motility of eukaryotic cilia and flagella. Lessons from *Chlamydomonas reinhardtii*. *Plant Physiol.* 127, 1500–1507.
- Polin, M., Tuval, I., Drescher, K., Gollub, J. P., and Goldstein, R. E. (2009) *Chlamydomonas* swims with two "gears" in a eukaryotic version of run-and-tumble locomotion. *Science* 325, 487–490.
- Ishikawa, T. (2017) Axoneme structure from motile cilia. *Cold Spring Harbor Perspect. Biol.* 9, a028076.
- Hayashi, S., and Shingyoji, C. (2008) Mechanism of flagellar oscillation-bending-induced switching of dynein activity in elastase-treated axonemes of sea urchin sperm. *J. Cell Sci.* 121, 2833–2843.
- Heuser, T., Raytchev, M., Krell, J., Porter, M. E., and Nicastro, D. (2009) The dynein regulatory complex is the nexin link and a major regulatory node in cilia and flagella. *J. Cell Biol.* 187, 921–933.
- Bower, R., Tritschler, D., VanderWaal, K., Perrone, C. A., Mueller, J., Fox, L., Sale, W. S., and Porter, M. E. (2013) The N-DRC forms a conserved biochemical complex that maintains outer doublet alignment and limits microtubule sliding in motile axonemes. *Mol. Biol. Cell* 24, 1134–1152.
- Smith, E. F., and Sale, W. S. (1992) Regulation of dynein-driven microtubule sliding by the radial spokes in flagella. *Science* 257, 1557–1559.
- Carvalho-Santos, Z., Azimzadeh, J., Pereira-Leal, J. B., and Bettencourt-Dias, M. (2011) Tracing the origins of centrioles, cilia, and flagella. *J. Cell Biol.* 194, 165–175.
- Satir, P., and Christensen, S. T. (2007) Overview of structure and function of mammalian cilia. *Annu. Rev. Physiol.* 69, 377–400.
- Nicastro, D., Schwartz, C., Pierson, J., Gaudette, R., Porter, M. E., and McIntosh, J. R. (2006) The molecular architecture of axonemes revealed by cryoelectron tomography. *Science* 313, 944–948.
- Pazour, G. J., Agrin, N., Leszyk, J., and Witman, G. B. (2005) Proteomic analysis of a eukaryotic cilium. *J. Cell Biol.* 170, 103–113.
- Yagi, T., Uematsu, K., Liu, Z., and Kamiya, R. (2009) Identification of dyneins that localize exclusively to the proximal portion of *Chlamydomonas* flagella. *J. Cell Sci.* 122, 1306–1314.
- Milisav, I. (1998) Dynein and dynein-related genes. *Cell Motil. Cytoskeleton* 39, 261–272.
- Gibbons, I. (1966) Studies on the adenosine triphosphatase activity of 14 and 30 S dynein from cilia of *Tetrahymena*. *J. Biol. Chem.* 241, 5590–5596.
- Ogawa, K., and Mohri, H. (1972) Studies on flagellar ATPase from sea urchin spermatozoa. I. Purification and some properties of the enzyme. *Biochim. Biophys. Acta, Bioenerg.* 256, 142–155.
- Lin, J., Tritschler, D., Song, K., Barber, C. F., Cobb, J. S., Porter, M. E., and Nicastro, D. (2011) Building blocks of the nexin-dynein regulatory complex in *Chlamydomonas* flagella. *J. Biol. Chem.* 286, 29175–29191.
- Pollard, T. D., Earnshaw, W. C., Lippincott-Schwartz, J., and Johnson, G. (2016) *Cell Biology E-Book*, Elsevier Health Sciences.
- Dustin, P. (2012) *Microtubules*, Springer Science & Business Media.
- Barton, N. R., and Goldstein, L. (1996) Going mobile: microtubule motors and chromosome segregation. *Proc. Natl. Acad. Sci. U. S. A.* 93, 1735–1742.
- Hyman, A. A., and Karsenti, E. (1996) Morphogenetic properties of microtubules and mitotic spindle assembly. *Cell* 84, 401–410.
- Bashirzadeh, Y., and Liu, A. P. (2019) Encapsulation of the cytoskeleton: towards mimicking the mechanics of a cell. *Soft Matter* 15, 8425–8436.
- Nedlec, F. J., Surrey, T., Maggs, A. C., and Leibler, S. (1997) Self-organization of microtubules and motors. *Nature* 389, 305–308.

- (34) Miyata, M., Robinson, R. C., Uyeda, T. Q., Fukumori, Y., Fukushima, S.-i., Haruta, S., Homma, M., Inaba, K., Ito, M., Kaito, C., Kato, K., Wakabayashi, K.-i., et al. (2020) Tree of motility—A proposed history of motility systems in the tree of life. *Genes Cells* 25, 6–21.
- (35) Otrin, L., Marusic, N., Bednarz, C., Vidakovic-Koch, T., Lieberwirth, I., Landfester, K., and Sundmacher, K. (2017) Toward artificial mitochondrion: mimicking oxidative phosphorylation in polymer and hybrid membranes. *Nano Lett.* 17, 6816–6821.
- (36) Kleineberg, C., Wölfer, C., Abbasnia, A., Pischel, D., Bednarz, C., Ivanov, I., Heitkamp, T., Börsch, M., Sundmacher, K., and Vidakovic-Koch, T. (2020) Light-driven ATP regeneration in diblock-grafted hybrid vesicles. *ChemBioChem* 21, 2149–2160.
- (37) Steinberg-Yfrach, G., Rigaud, J.-L., Durantini, E. N., Moore, A. L., Gust, D., and Moore, T. A. (1998) Light-driven production of ATP catalyzed by F₀F₁-ATP synthase in an artificial photosynthetic membrane. *Nature* 392, 479–482.
- (38) Rigaud, J.-L., Pitard, B., and Levy, D. (1995) Reconstitution of membrane proteins into liposomes: application to energy-transducing membrane proteins. *Biochim. Biophys. Acta, Bioenerg.* 1231, 223–246.
- (39) Matuschka, S., Zwicker, K., Nawroth, T., and Zimmer, G. (1995) ATP synthesis by purified ATP-synthase from beef heart mitochondria after coreconstitution with bacteriorhodopsin. *Arch. Biochem. Biophys.* 322, 135–142.
- (40) Richard, P., and Gräber, P. (1992) Kinetics of ATP synthesis catalyzed by the H⁺-ATPase from chloroplasts (CF₀F₁) reconstituted into liposomes and coreconstituted with bacteriorhodopsin. *Eur. J. Biochem.* 210, 287–291.
- (41) Pitard, B., Richard, P., Duñach, M., and Rigaud, J.-L. (1996) ATP synthesis by the F₀F₁ ATP synthase from thermophilic *Bacillus PS3* reconstituted into liposomes with bacteriorhodopsin: 2. Relationships between proton motive force and ATP synthesis. *Eur. J. Biochem.* 235, 779–788.
- (42) Miller, T. E., Beneyton, T., Schwander, T., Diehl, C., Girault, M., McLean, R., Chotel, T., Claus, P., Cortina, N. S., Baret, J.-C., and Erb, T. J. (2020) Light-powered CO₂ fixation in a chloroplast mimic with natural and synthetic parts. *Science* 368, 649–654.
- (43) Lee, K. Y., Park, S.-J., Lee, K. A., Kim, S.-H., Kim, H., Meroz, Y., Mahadevan, L., Jung, K.-H., Ahn, T. K., Parker, K. K., and Shin, K. (2018) Photosynthetic artificial organelles sustain and control ATP-dependent reactions in a protocellular system. *Nat. Biotechnol.* 36, 530–535.
- (44) Berhanu, S., Ueda, T., and Kuruma, Y. (2019) Artificial photosynthetic cell producing energy for protein synthesis. *Nat. Commun.* 10, 1325.
- (45) Ishmukhametov, R. R., Galkin, M. A., and Vik, S. B. (2005) Ultrafast purification and reconstitution of His-tagged cysteine-less *Escherichia coli* F₁F₀ ATP synthase. *Biochim. Biophys. Acta, Bioenerg.* 1706, 110–116.
- (46) Oesterhelt, D., and Stoekenius, W. (1974) Isolation of the cell membrane of *Halobacterium halobium* and its fractionation into red and purple membrane. *Methods Enzymol.* 31, 667–678.
- (47) Fischer, S., and Gräber, P. (1999) Comparison of Δ pH- and $\Delta\varphi$ -driven ATP synthesis catalyzed by the H⁺-ATPases from *Escherichia coli* or chloroplasts reconstituted into liposomes. *FEBS Lett.* 457, 327–332.
- (48) Wagner, N., Gutweiler, M., Pabst, R., and Dose, K. (1987) Coreconstitution of bacterial ATP synthase with monomeric bacteriorhodopsin into liposomes: A comparison between the efficiency of monomeric bacteriorhodopsin and purple membrane patches in coreconstitution experiments. *Eur. J. Biochem.* 165, 177–183.
- (49) Racker, E., and Stoekenius, W. (1974) Reconstitution of purple membrane vesicles catalyzing light-driven proton uptake and adenosine triphosphate formation. *J. Biol. Chem.* 249, 662–663.
- (50) Choi, H.-J., and Montemagno, C. D. (2005) Artificial organelle: ATP synthesis from cellular mimetic polymersomes. *Nano Lett.* 5, 2538–2542.
- (51) Kirakosyan, G., Bagramyan, K., and Trchounian, A. (2004) Redox sensing by *Escherichia coli*: effects of dithiothreitol, a redox reagent reducing disulphides, on bacterial growth. *Biochem. Biophys. Res. Commun.* 325, 803–806.
- (52) Geyer, V. F., Sartori, P., Friedrich, B. M., Jülicher, F., and Howard, J. (2016) Independent control of the static and dynamic components of the *Chlamydomonas* flagellar beat. *Curr. Biol.* 26, 1098–1103.
- (53) Geyer, V. (2013) *Characterization of the flagellar beat of the single cell green alga Chlamydomonas reinhardtii*. Ph.D. thesis, Sächsische Landesbibliothek-Staats- und Universitätsbibliothek, Dresden.
- (54) Mondal, D., Adhikari, R., and Sharma, P. (2020) Internal friction controls active ciliary oscillations near the instability threshold. *Science advances* 6, eabb0503.
- (55) Chen, D. T., Heymann, M., Fraden, S., Nicastrò, D., and Dogic, Z. (2015) ATP consumption of eukaryotic flagella measured at a single-cell level. *Biophys. J.* 109, 2562–2573.
- (56) Brokaw, C., and Simonick, T. (1977) Mechanochemical coupling in flagella. V. Effects of viscosity on movement and ATP-dephosphorylation of Triton-demembrated sea-urchin spermatozoa. *J. Cell Sci.* 23, 227–241.
- (57) Inoue, Y., and Shingyoji, C. (2007) The roles of noncatalytic ATP binding and ADP binding in the regulation of dynein motile activity in flagella. *Cell Motil. Cytoskeleton* 64, 690–704.
- (58) Kikushima, K., Yagi, T., and Kamiya, R. (2004) Slow ADP-dependent acceleration of microtubule translocation produced by an axonemal dynein. *FEBS Lett.* 563, 119–122.
- (59) Shiroguchi, K., and Toyoshima, Y. Y. (2001) Regulation of monomeric dynein activity by ATP and ADP concentrations. *Cell Motil. Cytoskeleton* 49, 189–199.
- (60) Frey, E., Brokaw, C. J., and Omoto, C. K. (1997) Reactivation at low ATP distinguishes among classes of paralyzed flagella mutants. *Cell Motil. Cytoskeleton* 38, 91–99.
- (61) Omoto, C., Yagi, T., Kurimoto, E., and Kamiya, R. (1996) Ability of paralyzed flagella mutants of *Chlamydomonas* to move. *Cell Motil. Cytoskeleton* 33, 88–94.
- (62) Yoshimura, A., Nakano, I., and Shingyoji, C. (2007) Inhibition by ATP and activation by ADP in the regulation of flagellar movement in sea urchin sperm. *Cell Motil. Cytoskeleton* 64, 777–793.
- (63) Lesich, K. A., Pelle, D. W., and Lindemann, C. B. (2008) Insights into the mechanism of ADP action on flagellar motility derived from studies on bull sperm. *Biophys. J.* 95, 472–482.
- (64) Xu, C., and Prince, J. L. (1997) Gradient vector flow: A new external force for snakes. *IEEE Proc. CVPR*, 66–71.
- (65) Xu, C., and Prince, J. L. (1998) Snakes, shapes, and gradient vector flow. *IEEE Trans. Image Process.* 7, 359–369.
- (66) Stephens, G. J., Johnson-Kerner, B., Bialek, W., and Ryu, W. S. (2008) Dimensionality and dynamics in the behavior of *C. elegans*. *PLoS Comput. Biol.* 4, e1000028.
- (67) Schmidt, J. A., and Eckert, R. (1976) Calcium couples flagellar reversal to photostimulation in *Chlamydomonas reinhardtii*. *Nature* 262, 713–715.
- (68) Bessen, M., Fay, R. B., and Witman, G. B. (1980) Calcium control of waveform in isolated flagellar axonemes of *Chlamydomonas*. *J. Cell Biol.* 86, 446–455.
- (69) Gui, M., Ma, M., Sze-Tu, E., Wang, X., Koh, F., Zhong, E. D., Berger, B., Davis, J. H., Dutcher, S. K., Zhang, R., and Brown, A. (2020) Structures of radial spokes and associated complexes important for ciliary motility. *Nat. Struct. Mol. Biol.*, DOI: 10.1038/s41594-020-00530-0.
- (70) Struebing, T., Khosravanizadeh, A., Vilfan, A., Bodenschatz, E., Golestanian, R., and Guido, I. (2020) Wrinkling instability in 3D active nematics. *Nano Lett.* 20, 6281.
- (71) Suzuki, K., Miyazaki, M., Takagi, J., Itabashi, T., and Ishiwata, S. (2017) Spatial confinement of active microtubule networks induces large-scale rotational cytoplasmic flow. *Proc. Natl. Acad. Sci. U. S. A.* 114, 2922–2927.

- (72) Beard, D. A. (2005) A biophysical model of the mitochondrial respiratory system and oxidative phosphorylation. *PLoS Comput. Biol.* 1, e36.
- (73) del Rosario, R. C., Oppawsky, C., Tittor, J., and Oesterhelt, D. (2010) Modeling the membrane potential generation of bacteriorhodopsin. *Math. Biosci.* 225, 68–80.
- (74) Krupinski, J., and Hammes, G. G. (1986) Steady-state ATP synthesis by bacteriorhodopsin and chloroplast coupling factor co-reconstituted into asolectin vesicles. *Proc. Natl. Acad. Sci. U. S. A.* 83, 4233–4237.
- (75) Yagi, T. (2000) ADP-dependent microtubule translocation by flagellar inner-arm dyneins. *Cell Struct. Funct.* 25, 263–267.
- (76) Ngweniform, P., Li, D., and Mao, C. (2009) Self-assembly of drug-loaded liposomes on genetically engineered protein nanotubes: a potential anti-cancer drug delivery vector. *Soft Matter* 5, 954–956.
- (77) Hallan, S. S., Kaur, P., Kaur, V., Mishra, N., and Vaidya, B. (2016) Lipid polymer hybrid as emerging tool in nanocarriers for oral drug delivery. *Artif. Cells, Nanomed., Biotechnol.* 44, 334–349.
- (78) Ahmed, K. S., Hussein, S. A., Ali, A. H., Korma, S. A., Lipeng, Q., and Jinghua, C. (2019) Liposome: Composition, characterisation, preparation, and recent innovation in clinical applications. *J. Drug Targeting* 27, 742–761.
- (79) Xu, H., Medina-Sánchez, M., Magdanz, V., Schwarz, L., Hebenstreit, F., and Schmidt, O. G. (2018) Sperm-hybrid micromotor for targeted drug delivery. *ACS Nano* 12, 327–337.
- (80) Witman, G. B. (1986) *Methods Enzymol.* 134, 280–290.
- (81) Alper, J., Geyer, V., Mukundan, V., and Howard, J. (2013) *Methods Enzymol.* 524, 343–369.
- (82) Gray, J., and Hancock, G. (1955) The propulsion of sea-urchin spermatozoa. *J. Exp. Biol.* 32, 802–814.
- (83) Gilbert, S. P., and Johnson, K. A. (1993) Expression, purification, and characterization of the *Drosophila* kinesin motor domain produced in *Escherichia coli*. *Biochemistry* 32, 4677–4684.
- (84) Young, E. C., Berliner, E., Mahtani, H. K., Perez-Ramirez, B., and Gelles, J. (1995) Subunit interactions in dimeric kinesin heavy chain derivatives that lack the kinesin rod. *J. Biol. Chem.* 270, 3926–3931.
- (85) Fischer, S. (1999) *Isolation, Rekonstitution und kinetische Charakterisierung der H⁺-ATPsynthase aus Escherichia coli*. Ph.D. thesis, Universität Stuttgart.